

Systecon Standard Packages provide indoor comfort systems and comprehensive facility solutions for institutional, commercial, industrial, and other uses.

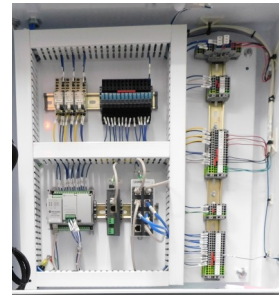
Systecon has revamped its pump package offering with:

- Streamlined ethernet based controls
- Improved mechanical design
- The latest ACH580 VFDs from ABB

## Applications

Pump Packages typically complement an array of products including:

- Air-cooled and water-cooled chillers
- Cooling towers, adiabatic and closed-circuit coolers
- Boilers



## Major System Components

- Pumps – end suction for all products
- Variable Speed Drives
- Structural steel base
- Controls
- Spare I/O available on all units



## Systecon's Differentiators

- Integrated controls and control valves
- Optional single point power and power to ancillary systems
- Hydronic specialties including: air separator/mixers, expansion tanks, glycol feeders, and make-up water
- System specialties including: integrated vibration isolation, NEMA 3R outdoor-rated construction, and fully enclosed, weatherproof construction