

Templated Chiller Plants

*“Because the Templated
Chiller Plants come as
repeatable, pre-engineered
designs, they’re available
with very competitive
lead times and include high
quality components at
favorable prices.”*

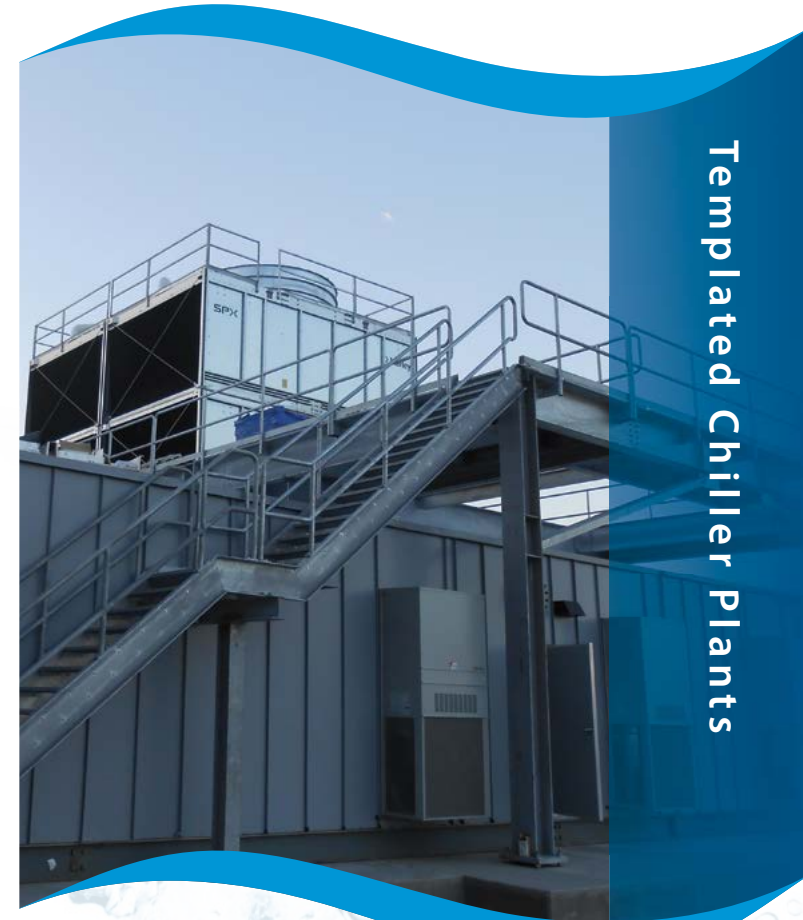


www.systecon.com



6121 Schumacher Park Drive

West Chester, OH 45069 • (513) 777-7722



Templated Chiller Plants



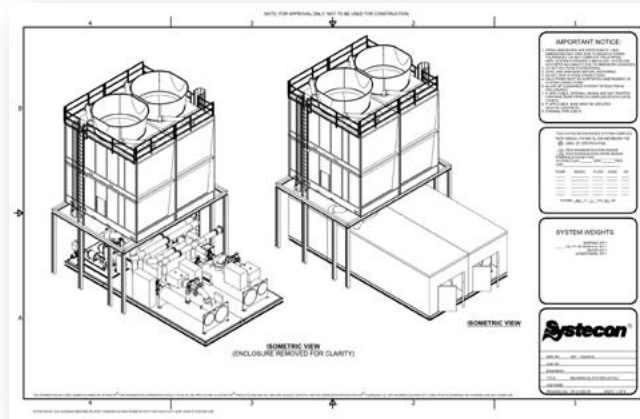
Templated Chiller Plants

Templated Chiller Plants

Need a complete, factory tested chiller plant but not the long lead time, cost, and hassle that come with installing a chilled water plant? A Templated Chiller Plant could be the answer.

Systecon Inc. offers a line of pre-engineered chiller plants available in incremental sizes up to 2,000 tons, appropriate for a variety of applications. Because the Templated Chiller Plants come as repeatable, pre-engineered designs, they're available with very competitive lead times and include high quality components at favorable prices.

Plus, customization is still an option. You can engineer in a variety of additional components to satisfy the unique requirements of your specific project.



Increased Productivity

Systecon Inc. Templated Chiller Plants offer speed, convenience and quality for your project. Using templated designs mean that proposals, pricing, equipment selection, and specifications for each plant are already completed. This drastically reduces design times.

Once design is complete, construction can immediately begin in our facility, regardless of site availability. The plant is completed in parallel with the rest of the project, providing faster lead times.

Upon completion, each system is factory tested for quality and performance, making start-up and commissioning much faster. And the modular design of the plant greatly reduces installation time.

Typical Components

Scope for a Systecon Inc. Templated Chiller Plant includes, but is not limited to:

- Chillers
- Cooling Towers
- Chilled Water Pumps
- Condenser Water Pumps
- System Piping
- Factory Testing
- Piping Specialties
- Enclosure and Base
- Cooling Tower Support Structure
- Electrical Components and Provisions
- Systecon PLC Controls with Interactive Optimization™

